

Emergency Appeal Funding Level

In 2019, US\$ 220 million was needed to cover the costs of the Agency's emergency interventions in Syria. However, only 30.2 per cent of total funding requirements were pledged or received by end of the year.

Implications of Underfunding

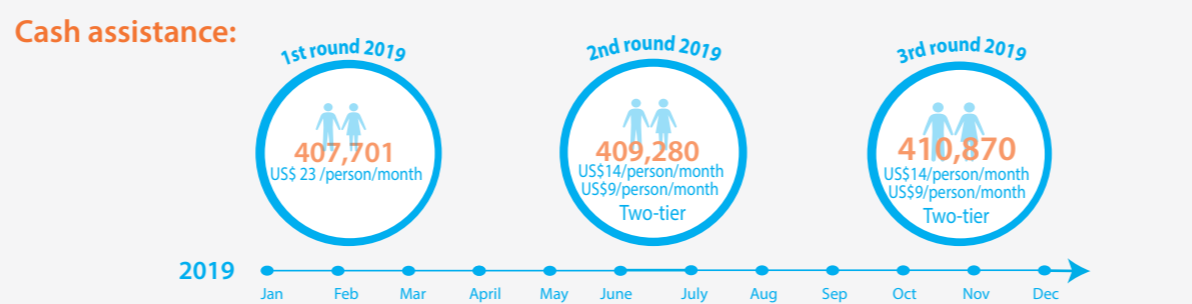
In 2019, funding shortfall constrained the Agency's emergency interventions in Syria. Emergency services provided by UNRWA constitute the minimum support necessary to meet the critical needs of Palestine refugees affected by conflict in Syria. Reductions in such support has a profound impact on Palestine refugees' resilience, resulting in further depletion of their coping capacities.

Lack of funding forced the Agency to reduce the amount of cash assistance provided per person per month nearly by half. UNRWA also had to limit the number of food distribution rounds from six to three. Livelihood interventions (microfinance and TVET) did not receive EA funding, thus limiting their scope. Necessary rehabilitation and maintenance works on UNRWA installations were also restricted.

Socioeconomic Challenges

Displacement, loss of livelihoods and assets, destruction or damage of homes and basic infrastructure, and movement restrictions in certain areas are among the many factors that have largely depleted the coping mechanisms of the 438,000 Palestine refugees estimated to be in Syria in 2019.

Fluctuations in the prices of basic commodities, rising inflation, shortage in fuel and gasoline, and rapid depreciation in the value of the Syrian pound compounded the effects of the conflict on Syrians and Palestine refugees alike.



UNRWA has introduced a targeted approach to its cash assistance programme in 2019 to make best use of the available resources and prioritize most vulnerable Palestine refugees. Throughout 2019, UNRWA reached approximately 411,000 Palestine refugees with cash assistance for food and non-food items, including about 127,000 belonging to the most vulnerable categories.

411K

In-kind food assistance:

The Agency's food assistance programme continues to be highly valued by the most vulnerable Palestine refugees as it provides them with a range of staple food items. 136,000 individuals, including the most vulnerable Palestine refugees, those in areas where access remains constrained, and those newly displaced have been provided with in-kind food assistance.

136K

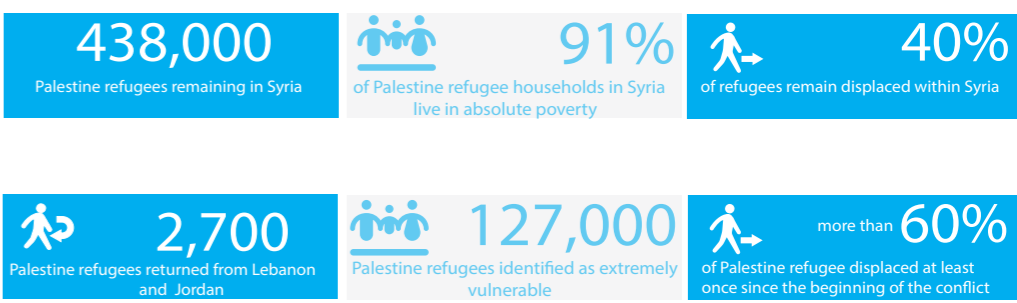
In-kind NFI assistance:

UNRWA assisted 31,000 Palestine refugees with in kind non-food items. Due to the limited funding available, UNRWA had to restrict the distribution of NFIs to Palestine refugees who continued to face mobility restrictions in Yalda, Babila and Beit Sahem (YBB), and to the most urgent cases only.

31K

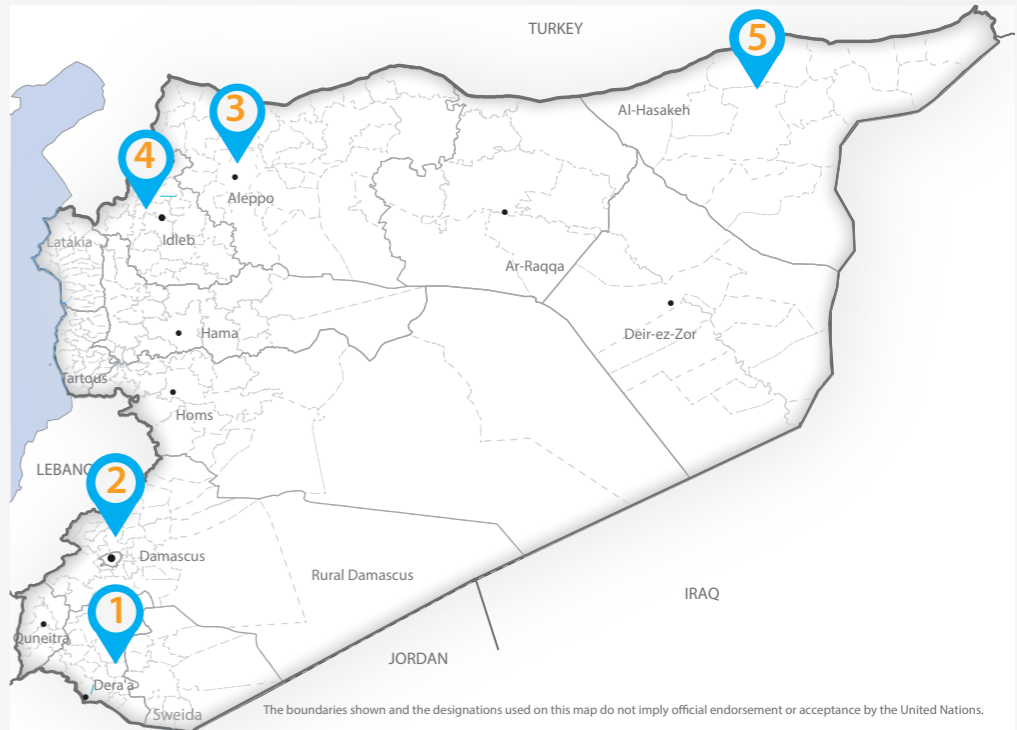
| | | | |
|--|--|---|--|
| UNRWA students 50K | health consultations 814K | TVET graduates 500* 5 TVET centres | legal assistance 3.8K Palestine refugees reached |
| UNRWA-run schools 103 | UNRWA-run health facilities 25 including 2 mobile clinics | TVET specialization courses 31* | mine risk awareness 57K Palestine refugees reached |
| UNRWA 9th graders success rate 85.3% | dental consultations 91K | microfinance loans 10K* 4 microfinance centres | psychosocial support 43K Palestine refugees reached |

* livelihood activities were not funded under Emergency Appeal



Context Update:

- Dera'a camp:** About 800 families have returned to this conflict-affected camp. Basic infrastructure services are partially restored. UNRWA rehabilitated ten classrooms in Tiberius school and part of the sewer network. In 2020, the Agency plans to rehabilitate more installations including another school and a clinic.
- Yarmouk camp/Yalda:** The future of the camp remains unclear as of end of 2019. About 100 families have returned despite the destruction and lack of services. In neighboring Yalda, many members of the 2,000 displaced families still face movement restrictions.
- Ein El-Tal camp:** The camp remains largely in ruins, lacking basic infrastructure services. About 90 families are estimated to have returned to the camp despite the difficult living conditions.
- Idlib/Northwest:** Hostilities in Syria's Idlib province intensified towards end of 2019. Fierce fighting resulted in the death of many civilians and forced tens of thousands to leave their homes. Several hundred Palestine refugee families are estimated to reside in the area.
- Northeast:** The launch of military operations in the northeast in October 2019 led to escalation of violence. UNRWA continues to provide cash assistance to 645 Palestine refugees in areas affected by hostilities.



Q1

- January:** UNRWA launches its Syria Regional Crisis response, appealing for US\$ 221 million for the Syria portion. to ensure delivery of humanitarian assistance and emergency interventions.
- February:** UNRWA provides NFI and WASH items to a total of 840 Palestine refugees who returned to Dera'a camp despite the lack of basic infrastructure, mainly to save on rent expenses.
- March:** UNRWA conducts two humanitarian missions to Yalda. Some 2,400 Palestine refugee families, most of whom displaced from Yarmouk, receive food and NFI assistance.

Q2

- April:** UNRWA conducts the first round of targeted food assistance of 2019, prioritizing the most vulnerable categories of Palestine refugees.
- May:** Violence escalates rapidly in Idlib and surrounding Hama and Aleppo. On 16 May, several rockets hit the densely populated Neirab camp, killing at least ten civilians and wounding more than thirty.
- June:** Some 4,546 9th UNRWA students across Syria write their national exam. UNRWA hosts 171 students (9th and 12th grade) who had been displaced to Lebanon to help them sit their national exam in Syria.

Q3

- July:** UNRWA launches summer learning activities in 38 clubs located in schools in Damascus, Rif Damascus, Aleppo, Homs, Hama and Latakia reaching 11,265 students (6,133 female, and 5,132 male).
- August:** On 29 August, UNRWA concludes the second round of cash distribution in 2019, which uses the targeted approach for the first time.
- September:** Over 50,000 students from grades 1 to 9 enroll in 103 UNRWA-run schools in Damascus, Homs, Hama, Aleppo, Latakia, and Dera'a governorates.

Q4

- October:** The launch of military operations in the northeast leads to escalation of violence. UNRWA continues to provide cash assistance to 645 Palestine refugees in areas affected by hostilities.
- November:** As of 30 November 2019, only 27.3 per cent of UNRWA Emergency Appeal requirements for Syria are covered. The Agency had to scale down its operations in 2019, including cash assistance.
- December:** UNRWA commemorated the International Day of Persons with Disabilities with an event that brought together families and leaders.