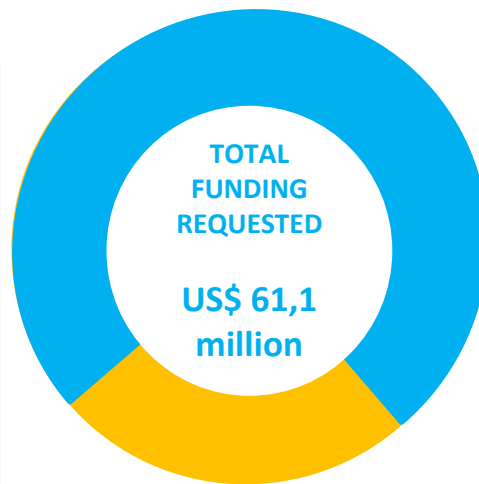


2018 EMERGENCY APPEAL

Now in its eighth year, the conflict in Syria continues to have shattering consequences for ordinary people whom have lost their homes, livelihoods and security. Palestine refugees are one of the communities worst affected by the conflict. They rely on UNRWA to provide life-saving aid including food, water, shelter and medical assistance.

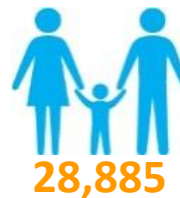
With donor funds received in 2018, UNRWA was able to cover Cash for Food, Multipurpose Cash, winterization assistance, Emergency Health and Emergency Education until the end of December 2018. For Q1 of 2019 UNRWA will not be able to cover Cash for Food in March 2019.

The activities undertaken within the reporting period were made possible thanks to the generous contributions from Belgium, the EU (MADAD), Japan, Germany, Norway, UNOCHA, UNICEF, and WFP.

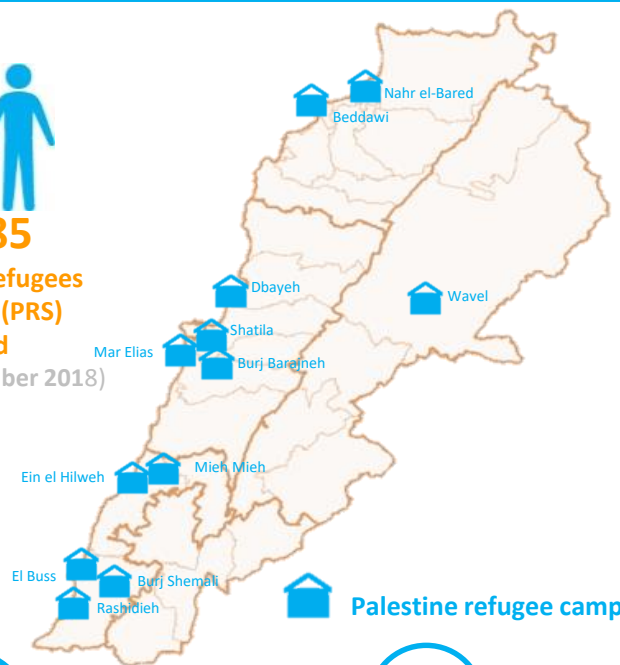


27.3 % unfunded*

*as at 31 December 2018, including carry forward & multiyear contributions & confirmed pledges



28,885
Palestinian refugees from Syria (PRS) in need
(as at 31 December 2018)



CASH ASSISTANCE

UNRWA provided 29,145 PRS with cash-for-food assistance equal to US\$ 27 per person per month in November, and for 28,885 PRS in December. A total of 8,728 PRS families in November and 8,644 PRS families in December benefited from multipurpose cash assistance to the amount of US\$ 100 per family. In December, 8,641 PRS families received winterization assistance equal to USD 75 for 5 months.

November: 29,145 PRS 8,728 PRS families



December: 28,885 PRS 8,644 PRS families



EDUCATION

For the 2018/2019 school year, 5,254 PRS children enrolled in 64 UNRWA schools. This represents a decrease of 228 PRS students from the previous scholastic year. In addition, during the reporting period, 184 PRS took part in school trips. 672 PRS were provided with transportation in November and 686 in December.

5,254 students enrolled in **64** UNRWA schools



HEALTH

UNRWA provided 24,092 health consultations to PRS during the reporting period. A total of 160 PRS received hospitalization care (at secondary and tertiary level) in November and 174 in December. Furthermore, outpatient and emergency services were provided to 140 PRS patients (November) and 140 PRS patients (December).

24,092 health consultations to PRS



ENVIRONMENTAL HEALTH

During the reporting period, infrastructural work in the camps continued including rehabilitation of a solid waste platform in Wavel and provision of second access to solid waste platform at NBC and furnishing of Murshid water well at EHC. An additional 47 emergency sanitation labourers have assisted the core UNRWA team to remove an average of 4,830 tones per month of solid waste in all 12 camps.

Average solid waste collected per month: **4,830** tones



PROTECTION

Legal services including counselling, legal assistance, representation were provided to 241 PRS in November and 276 PRS in December. 146 UNRWA Staff were trained on protection and neutrality principles. The Women's Programme Association (WPA) centres recorded 642 PRS participants including women, men, boys and girls in their activities, while 269 PRS participated in GBV information and sensitization sessions during the reporting period.

November **241** legal aid beneficiaries

December **276** legal aid beneficiaries

642 participants recorded in WPA activities

